

## Easy Set-up

Simple 'setup' software is supplied with OnGuard. Your laptop can be connected to the controller by a serial modem cable (supplied). Programming of patrol periods, rest periods and routes is as simple as 123.

DISTRIBUTOR



Manufactured by

Astute Electronics  
Unit13D, Westlake Square  
1 Westlake Drive, Westlake, South Africa

Tel: 021 - 701 7777

[www.onguard.co.za](http://www.onguard.co.za)  
email: [info@onguard.co.za](mailto:info@onguard.co.za)

**On-Guard  
Management  
System**

## Easy Set-up

Simple 'setup' software is supplied with OnGuard. Your laptop can be connected to the controller by a serial modem cable (supplied). Programming of patrol periods, rest periods and routes is as simple as 123.

DISTRIBUTOR



Manufactured by

Astute Electronics  
Unit13D, Westlake Square  
1 Westlake Drive, Westlake, South Africa

Tel: 021 - 701 7777

[www.onguard.co.za](http://www.onguard.co.za)  
email: [info@onguard.co.za](mailto:info@onguard.co.za)

**On-Guard  
Management  
System**

## i-Button Technology

### Are your guards destroying your batons?

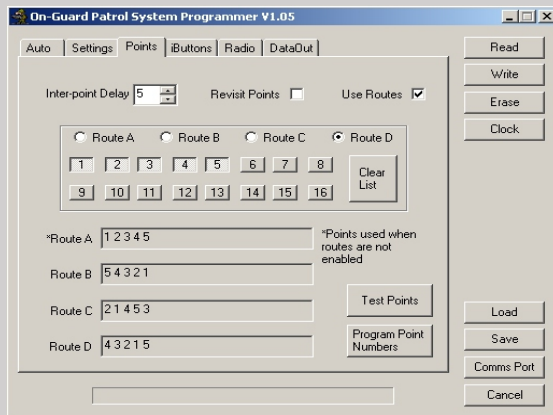
Batons have long been the downfall of traditional guard systems. OnGuard uses reliable i-Button technology. Each guard can be provided with his own low cost i-Button, making him identifiable to the system's event. i-Buttons are stainless steel casings containing microchip circuitry. They are impact resistant, chemical and waterproof.

- The system can accept up to 60 tags
- The cost of replacement tags is a fraction of the cost of traditional Batons
- Each guard could be issued with his own tag
- Micro-points are sealed and have a 5 year battery life



## Random Guard Routes

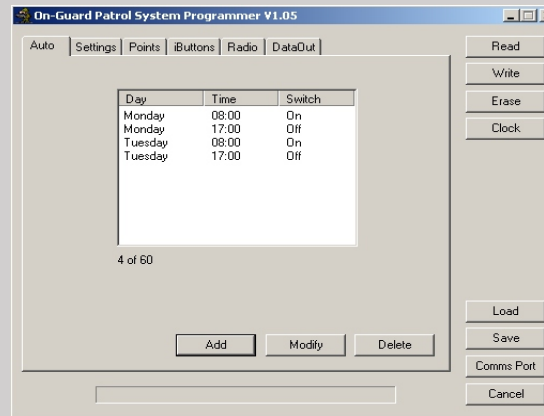
Guards will be prompted by OnGuard to follow programmed routes if invoked. Up to 4 different routes may be selected.



1 to 16 Points may be added

## Book on / off

OnGuard has a unique built in programmable schedule.

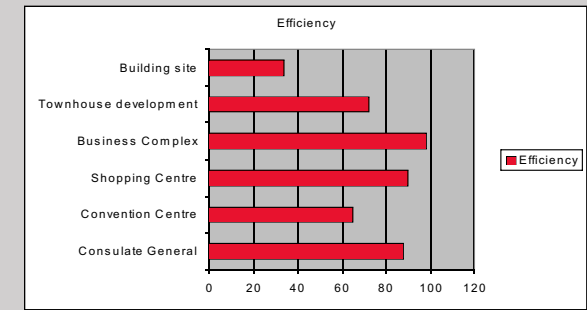


## Event Log

Transactions may be downloaded via Flash Drive and then uploaded to OnGuard's management software for interpretation.



Sandton Towers							
Date	Time	Route	Event	iButton	Points	Visited	Efficiency
Jun-06	13H00	Route A	Patrol Start	James			
Jun-06	13H30	Route A	Point 1	James			
Jun-06	14H00	Route A	Point 2	James			
Jun-06	14H30	Route A	Point 3	James			
Jun-06	15H00	Route A	Patrol complete	James	3	3	100%
Jun-06	15H40	Route B	Point 2	Paul			
Jun-06	15H45	Route B	Point 1	Paul			
Jun-06	16H00	Route B	Incomplete Patrol	Paul	3	2	66%



## Interpoint Delay

Sleeping on the baton, a term used for a guard who races around the guard site thus extending his rest period, is preventable by invoking the interpoint delay. OnGuard's microprocessor controlled points will indicate that the guard has visited the point too soon and thus delay his progress.

## Radio Interface

9 Programmable outputs can be used to trigger most alarm radio transmitters. The outputs include:

- Patrol complete
- Missed point
- Patrol not started
- Patrol not finished
- Wrong route
- Inspector on / off site
- Mains fail / restore
- Fire
- Panic
- Tamper
- Guard on / off duty
- Start Patrol Now

Real time monitoring -  
By Radio transmitter or GSM modem